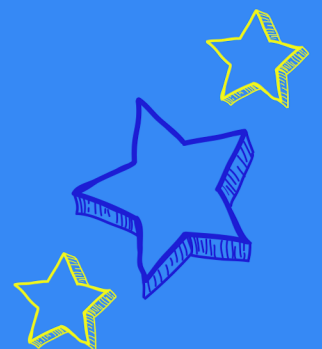
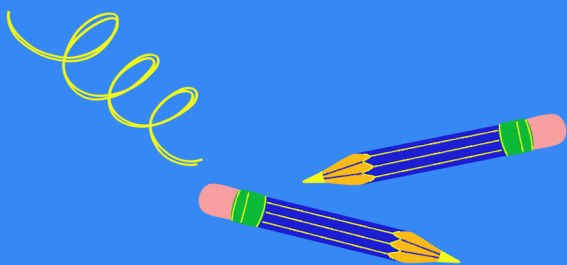




Caring, preparing, sharing



[www.camhillps.co.uk](http://www.camhillps.co.uk)





“Our school is a dynamic, forward-thinking school, where everyone is encouraged to be successful and work hard within a caring and enthusiastic environment.”



# Welcome to Camphill Primary School, Ballymena.

It is a pleasure to give you an insight into life in our school.

This prospectus aims to provide you with some information on our school and if you are a new parent, who has not yet had a child enrolled at this school, we take this opportunity to welcome you and look forward to a happy and successful association together over the coming years.

I am delighted to present to you the prospectus for our welcoming and vibrant school. Camphill PS is a well established and respected large school in Ballymena. All our facilities are of the highest quality which means children work together and play together in beautiful surroundings. The parents, teachers and governors cooperate closely to ensure that our children enjoy a safe, secure and stimulating environment. We recognise that each child is an individual and, therefore, the curriculum, extra-curricular activities and teaching approaches are all designed to encourage each child to experience success and to know that he/she is cared for and valued. We therefore strive for high academic standards within a caring, stimulating environment.

I am extremely proud to lead a highly dedicated and professional team who are committed to providing the best opportunities for children who attend Camphill PS.

Effective education demands that home and school work closely together, in partnership, to develop and maintain a shared vision of your child's education. It is our sincere hope, therefore, that mutual understanding and trust will be the basis of our shared responsibilities.

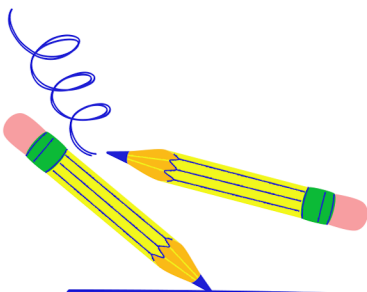
This Prospectus will give you some information which we hope you will find beneficial in ensuring your child will enjoy his/her stay at the school. No Prospectus can give you a full picture of what school is like but we hope that you will find it interesting and helpful. Please view our website [www.camphillps.co.uk](http://www.camphillps.co.uk) for more information.

The best way to find out about our school is to see us in action and meet the staff and children. Please contact us if you wish to see around our school. We look forward to welcoming you to our school and to a happy and successful partnership together.

Yours sincerely,

*Mrs. K. McMaster*

Principal



# About our School

---

Camphill Primary School is a controlled, co-educational school catering for children between the ages of four and eleven.

The school is set in extensive, well maintained grounds in the Carolhill Park area, off the Toome Road in Ballymena. The original school opened in 1967 and has since been replaced by a modern, state of the art building which opened in January 2007. Camphill PS celebrated 50 years of education in 2017/18.

The current school building was extended further in 2014 and now consists of 15 classrooms clustered around central resource areas, 2 learning support rooms, 1 group-work room, a large Main Hall and a separate Canteen/Dining Hall. There are extensive grounds surrounding the school including playgrounds, outdoor covered resource areas and grass play areas.

The school currently has an enrolment figure of 406 pupils. The school has a wide catchment area with children attending the school from the surrounding Ballymena area and neighbouring villages.

Staffing consists of the Principal, Vice-Principal, 16 teachers, 14 classroom assistants, three school secretaries, a building supervisor, three cleaners, supervisory staff, a cook and kitchen staff plus two school crossing patrol men. All staff are committed to working as part of a team and are conscientious, hardworking and dedicated to the school and its pupils. Staff enjoy good relations with parents and the wider school community and are always striving to promote this partnership further.

For a list of staff names and their designations please refer to the school website.

Principal; Mrs Karen McMaster  
Address; 65 Carolhill Park, Ballymena,  
Co. Antrim, BT42 2DG  
Telephone; 028 2565 2940  
Email; [info@camphillps.ballymena.ni.sch.uk](mailto:info@camphillps.ballymena.ni.sch.uk)  
Enrolment Number; 406  
Age Range of Pupils; 4-11yrs

Our Motto  
Caring, Preparing,  
Sharing.



## Aims & Values

**CARING** – provide a stimulating, happy, caring and secure learning environment where everyone can make mistakes and develop resilience

**AWARENESS** – develop and promote an awareness of the social skills necessary to be a contributing member of the community both in and out of school

**MOTIVATION** – motivate the children to develop lively, enquiring, imaginative and creative minds

**POSITIVITY** – promote positive attitudes and encourage respect for self, others and the environment

**HEALTH** – develop a healthy lifestyle and nurture a sense of responsibility in preparation for their future

**INDEPENDENCE** – encourage self-confidence and independence

**LEARNING** – provide learning opportunities for the pupils to develop their potential through the delivery of a broad and balanced curriculum

**LINKS** – foster good links between the school and the home and between the school and the wider community

**PRAISE** – develop an environment of praise and positive reinforcement

**SELF-EVALUATION** – encourage children to self-evaluate and become reflective thinkers

## School Vision

We believe our school can be a dynamic and vibrant place where all strive to create the best possible contemporary learning environment; where everybody feels special and has something of value to offer.

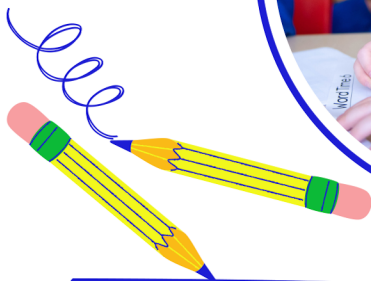
## Our Mission

We will strive to achieve our vision by creating a secure, caring, child-centred learning environment; where all children are inspired to reach their potential as independent lifelong learners and respectful, responsible citizens.

## Our School Ethos

At Camphill Primary School we are committed to developing an ethos where a safe, secure, happy and stimulating learning environment is provided. We seek to promote Christian values as guiding principles for life and living. It is our desire to develop an ethos where each member of the school community is sensitive to and caring towards the needs and cultures of others.

We aim to foster the development of tolerance, responsibility and respect and to provide equal opportunities for all. All our teachers are competent and committed to meeting the needs of all pupils. We encourage children to maximise their potential and achieve success.





“Camphill is an outstanding school. I feel the school shows a caring and nurturing environment while also maintaining high expectations and standards.”

(Parent 2023)

# Safeguarding

Camphill Primary School is committed to safeguarding and promoting the welfare of children and expects all staff and volunteers to share in this commitment. Staff work hard to maintain an environment where children feel safe and secure.

The curriculum is designed to ensure opportunities for children to develop the skills they need to recognise and stay safe from abuse. Children know that they can approach any of the adults in school if they are worried and that they will receive a consistent, supportive response.

In recognising our responsibilities for Safeguarding and Child Protection as a school we:

- ★ Have clear staff recruitment and selection procedures, ensuring that all staff (including volunteers), who have unsupervised access to children, have been appropriately checked for their suitability.
- ★ Aim to raise awareness of child protection issues and equip children with the skills needed to keep them safe.
- ★ Develop and implement procedures for identifying suspected cases of abuse.
- ★ Support children who have been abused in accordance with his/her child protection plan.
- ★ Establish a safe and nurturing environment free from discrimination or bullying where children can learn and develop happily.



## Pastoral Care

Our Pastoral ethos promotes a happy, caring and secure environment where every member of our school community is valued for their uniqueness and individual contributions to school life, and where achievements are celebrated and positive behaviour encouraged.

### Positive Behaviour Policy

To celebrate, reward and enhance the high standards of good behaviour in our school we run a whole-school reward system to encourage and reward good behaviour. Our Pastoral Care was rated as outstanding in the most recent ETI inspection.

### Anti-Bullying

All forms of bullying and harassment are considered to be unacceptable and are not tolerated within the school environment. All incidents will be taken very seriously and followed up in accordance with our Anti Bullying policy which is available via the school website/school office. As a school we believe that bullying is best prevented through an ethos of mutual respect and equality. The raising of children's self-esteem and self-confidence is central to the work and life of the school.



If you would like to know more about our policy or procedures for Safeguarding, please speak to;

Mrs Anna McLaughlin

(Designated Teacher for Child Protection/Head of Pastoral Care)

Miss Alison Scott

(Deputy Designated Teacher for Child Protection/Vice-Principal)

Mrs Stacy Greer

(Deputy Designated Teacher for Child Protection/SENCO)

Mr Henderson Ballentine (Chairperson of the Board of Governors)

Mr Alastair McNeill (Designated Governor for Child Protection)



“ Fantastic school. I knew from the Open Day that this school would do the best for my child. I'm proud to say my kids go to Camphill and I will always recommend it. ”

(Parent 2023)



# School Hours

We are very fortunate to operate a Breakfast Club from 08.15am in our canteen. Children can enjoy breakfast and playing with friends until they are welcomed into their classroom by their teacher from 8.45am.

Please see the school website for more details.

## School Begins 9.00am

Break: 10.30 - 10.45 (P1, 2, 3 & 4)  
10.45 - 11.00 (P5, 6 & 7)

Lunch: 12.00 - 12.45 (P1, 2, 3 & 4)  
12.15 - 13.00 (P5, 6 & 7)

School Ends: 14.00 (P1,2) (P3 Thurs & Fri)  
15.00 (P3 (Mon, Tues & Wed) P4, 5, 6 & 7)

Holidays are communicated in good time during the school year for the following year, and can be found on the school website.

It is the aim of Camphill PS to fully involve parents in the education of their children and to inform and consult with them regularly about their child's progress. Our arrangements for this are;

### ★ Induction/Start of the Year Communication

All parents and children are invited to meet the Principal and their child's teacher in June prior to enrolment.

In September all parents in all year groups are invited into school to meet their child's class teacher. Each teacher will outline how the areas of the curriculum will be covered and will explain classroom routines and expectations with regard to classwork and homework.



### ★ Progress Meetings

In October and February/March, parent-teacher meetings are arranged. This provides an opportunity to hear about your child's progress and discuss any issues or concerns you may have. Parents are welcome to make an appointment at any time to visit their child's class teacher.

Pupils are continually monitored to assess their progress and celebrate achievement. Assessment is an integral part of planning, learning and teaching in our school. Pupils participate in formal Assessments/Standardised Tests each academic year in order to track progress and attainment. Standardised Scores are reported to parents in the Annual Pupil Report.

### ★ Written Reports

A written report is issued in June of each year in which the performance of the child in each of the Curricular Areas is reported.

### ★ Parentmail

We use Parentmail as our main home/school communication forum, along with the school website.

# Attendance

Good attendance and punctuality are central to the learning process. For a child to succeed in the school environment it is essential that a high level of attendance is maintained.



## Drugs Education

In accordance with Government requirements, the school has a policy relating to Drugs Education. This element of the curriculum is taught within PDMU as children learn to value and maintain their health.

# Curriculum

Our aim is to provide a broad and balanced curriculum to give every child the opportunity to experience success in learning and to achieve as high a standard as possible.

The curriculum is made up of 3 Key Stages within primary school:

- ★ Foundation Stage -P1 & P2
- ★ Key Stage 1 - P3 & P4
- ★ Key Stage 2 - P5, P6, & P7

The curriculum for the three stages is set out in six areas of learning:

- ★ Language & Literacy
- ★ Mathematics & Numeracy
- ★ The Arts
- ★ The World Around Us
- ★ Personal Development and Mutual Understanding (PDMU)
- ★ Physical Education

Cross-Curricular Skills:

- ★ Communication
- ★ Using Mathematics
- ★ Using Information and Communications Technology

Thinking Skills and Personal Capabilities:

- ★ Thinking, Problem-Solving and Decision Making
- ★ Self-Management
- ★ Working with Others
- ★ Managing Information
- ★ Being Creative

Religious Education and Collective Worship

Religious Education (RE) is provided in accordance with the core syllabus throughout the school. RE is provided within each class and at regular assembly times where we have visits from local church ministry teams. Pupils also have the opportunity to lead school assembly during the school year.

Parents who object to the attendance of their children at assembly or R.E. lessons have the right of withdrawal. Arrangements can be made with the Principal.



# Additional Learning Needs

At Camphill PS we believe that every child is unique and special and we aim to support all pupils in ensuring that they can access a broad and balanced curriculum at every stage of their development.

The School's Special Needs and Inclusion Policy is in line with the Special Educational Needs and Disability (NI) Act. This enables the staff to fully implement the requirements of the Code of Practice on the Identification and Assessment of Special Educational Needs published by DENI. Where appropriate, school works closely with a range of support and external agencies to help children with additional needs.



# Homework

We encourage our parents to support the work of the school by helping with homework and playing an active role in their child's education.

# Educational Visits

Educational visits are an integral part of learning, with classes often visiting places of interest. The school also encourages visits from outside agencies to enhance learning. In upper Key Stage 2 residential visits are organised.

Homework can be written, oral or online and include:

- ★ Reading
- ★ Maths
- ★ Written activities
- ★ Phonic/Spelling work
- ★ Games/Play-Based Learning activities
- ★ Research

Homework is not only an essential part of our pupils' learning it also provides a link between home and school and gives parents an opportunity to support their child's learning as well as consolidating and reinforcing class work.

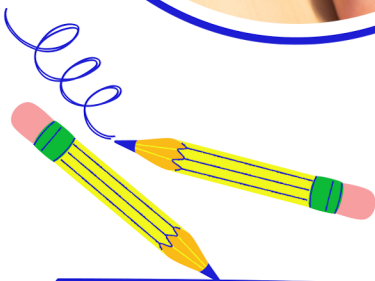


## Charges & Remissions' Policy

We provide a free education for all pupils under the Education Reform Order 1989. There are a few exceptions to this and these are detailed below;

- ★ All board, lodging and travel costs on residential trips
- ★ Costs associated with 'optional extras'-for example class visits, trips, external visiting groups/people or extra-curricular activities
- ★ Materials or ingredients used 'over and above' the normal classroom resources or materials used in practical subjects
- ★ Tuition in musical instrument/swimming instruction

The school may ask parents for voluntary contributions towards charity/fundraising or other events/activities from time to time.



# After School Activities

Extra Curricular activities are an important part of the life of the school and help develop relationships, social and sporting skills and engender a sense of community.

We offer a wide range of clubs within school and after school. These include:

★Choir ★Orchestra ★ Music Lessons ★STEM workshops ★Hockey  
★Football ★Rugby ★ Netball ★Tennis ★Ju-Jitsu ★Gymnastics  
★Dance ★Eco Club ★Scripture Union ★With pupils also being able to participate in the Cycling Proficiency Scheme in P7.

## Little stars Club

The school also runs a 'Little Stars' Club which is an afterschool childminding service between 2pm-3pm for P1/P2/P3 pupils.

## Music

Music is taught throughout the school and pupils develop their basic skills in recorder playing from P4 upwards. Pupils also have the opportunity to learn a musical instrument from P4. Experienced tutors from the Education Authority offer lessons for Strings, Guitar, Woodwind and Brass and a private tutor offers piano lessons. Pupils are encouraged to enter music exams and we have celebrated great success over the years. Children have the opportunity to develop their musicianship by joining the Junior and Senior Choirs and Orchestra. Pupils also perform at school events, Ballymena Music Festival, Radio Cracker, nursing homes, local churches and various concerts throughout the year.

## Sustrans Active Travel

Camphill Primary School is part of the Sustrans Active School Programme. The idea behind this is that we help educate pupils and parents about the benefits of walking and cycling to school. In May 2020 Camphill achieved the Gold Award, one of only a few schools in Northern Ireland to have achieved this.

## School Council

At Camphill Primary School we are very proud to have our own School Council for pupils from P3-P7. Each year we hold Council Elections. The School Council meets once every half term to discuss issues, make suggestions and put forward ideas for changes and improvements to help enhance the school experience for all pupils.

## Rights Respecting School

Camphill PS is a Rights Respecting School with Silver Award status. This prestigious award was achieved by creating a whole school ethos of respect and understanding of global citizenship.

## Take 5 School

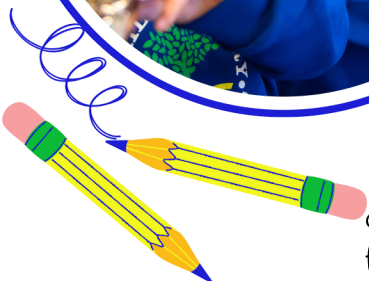
Camphill Primary School is an accredited Take 5 school and promotes the 5 steps to well-being throughout school.

## Eco Schools

Camphill Primary School has Green Flag status. Each year we maintain our connection with Eco Schools and ensure that new environmental projects are undertaken and successfully completed.

## Charities

Our School is involved in helping others and each year the children support charities through specific fundraising events.





“ The facilities at Camphill and the opportunities my child gets are superb. My child loves being part of a sports team. ”  
(Parent 2023)



# Health Promoting in School

An important part of our practice is the promotion of healthy eating.

To this end we ask children to have a healthy snack for their mid-morning break. We would appreciate your support in this, so that together we can encourage children to eat healthily throughout the day. Milk, toast and fruit are available to buy in school at breaktime.

We encourage the children to drink water throughout the day to stay hydrated, and to be best prepared for learning.

Our canteen follows all healthy eating policies and the menus available are both wide and varied, offering the healthiest choices. Our canteen menu is available on the school website. School dinners cost £2.60 each.

If you think your child is entitled to free school meals, please contact the Education Authority on tel; 02882411411 or via; [www.eani.org.uk/financial-help/free-school-meals-school-uniform-allowance](http://www.eani.org.uk/financial-help/free-school-meals-school-uniform-allowance)



## School Uniform

School uniform expected to be worn at all times includes:

- ★ Yellow polo shirt with school crest
- ★ School sweat shirt
- ★ Grey trousers/skirt or pinafore
- ★ Fleece / waterproof jacket
- ★ Slip on or velcro slippers are required for P.E. in Foundation/KS1 classes only
- ★ School PE kit required for PE in Key Stage 2

Optional uniform for Summer term & September;

- ★ Yellow polo shirt with school crest
- ★ Royal blue or grey shorts / grey skirt or pinafore
- ★ Blue / white gingham dress

Branded school uniform and PE kits are ordered through the school website at various times during the year. Parents will be informed of these dates.





# Admissions

---

Starting school is a very important time for you, your child and the school. We all need to work together to make the transition smooth and rewarding.

If the school's enrolment (406) and admission (58) numbers have not been reached the school will enrol all the children whose parents wish them to attend. In any year when these numbers are exceeded the Board of Governors will use criteria in deciding which pupils should be admitted.

# Enrolment Procedure

---

Parents wishing to commence their child's schooling in September of any year must complete an official application form.

This can be obtained from

[www.eani.org.uk/parents/admissions](http://www.eani.org.uk/parents/admissions)

If parents wish to discuss the enrolment of their child in Camphill Primary School they are advised to contact the school to arrange a meeting with the Principal.

## Admission To Any Other Year

If you wish to enrol your child with us throughout the year, please contact the Principal. We make every effort to make sure that they are welcomed, looked after, and monitored so that they quickly make friends and can find their way around the school.

# Complaints Procedure

---

Should any cause for concern arise during the time your child is with us it should be communicated to the relevant member of staff immediately.

“Very happy with the school, confident in the teachers and no concerns over my child's safety.”  
(Parent 2023)

“Camphill school is brilliant! The teaching staff seem to have a great way of working with the kids.”  
(Parent 2023)

“I could not fault the school at all! I love the school as does my son!”  
(Parent 2023)

“Excellent management, fantastic communication, lovely teachers and the standard of teaching is excellent across the board.”  
(Parent 2023)



# Camphill Primary School

65 Carolhill Park, Ballymena, BT42 2DG

Email: [info@camhillps.ballymena.ni.sch.uk](mailto:info@camhillps.ballymena.ni.sch.uk)

[www.camhillps.co.uk](http://www.camhillps.co.uk)

Tel; 028 2565 2940

